

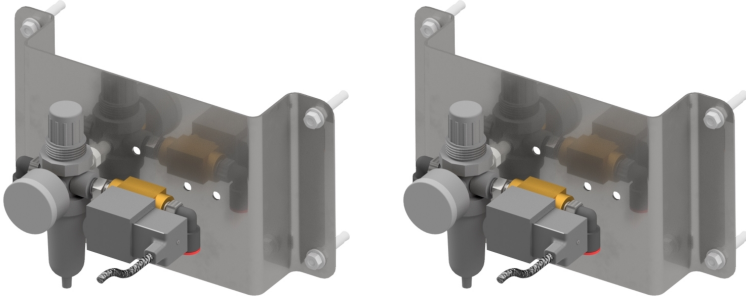
PECO Part #028096

MFG:



The Most
Helpful Brand
In Car Washing

2W1 2-WAY VALVE(1) 1-CONTROL 24VAC



Description

This valve assemble complete with Stainless Steel mounting bracket, air regulator and solenoid is typically use to foam soap on an applicator.

Specifications

Electrical Single Phase Requirements

Total System Electrical Single Phase Requirements:
0.42AMPs @ 24vac
0AMPs @ 120vac
0AMPs @ 220vac

2W1 2-WAY VALVE AIR CONTROL

Equipment Specification

Technical Data: 2W1

Construction: Stainless Steel Frame

Length: 11" (.28 m)

Height: 6" (0.15 m)

Width: 6" (0.15 m)

Vehicle Height Clearance: n/a

Water Output: n/a

Water Input: n/a

Electrical Requirements: 24 or 120 VAC (0.42 amp / .09 amp)

Hydraulic Requirements: n/a

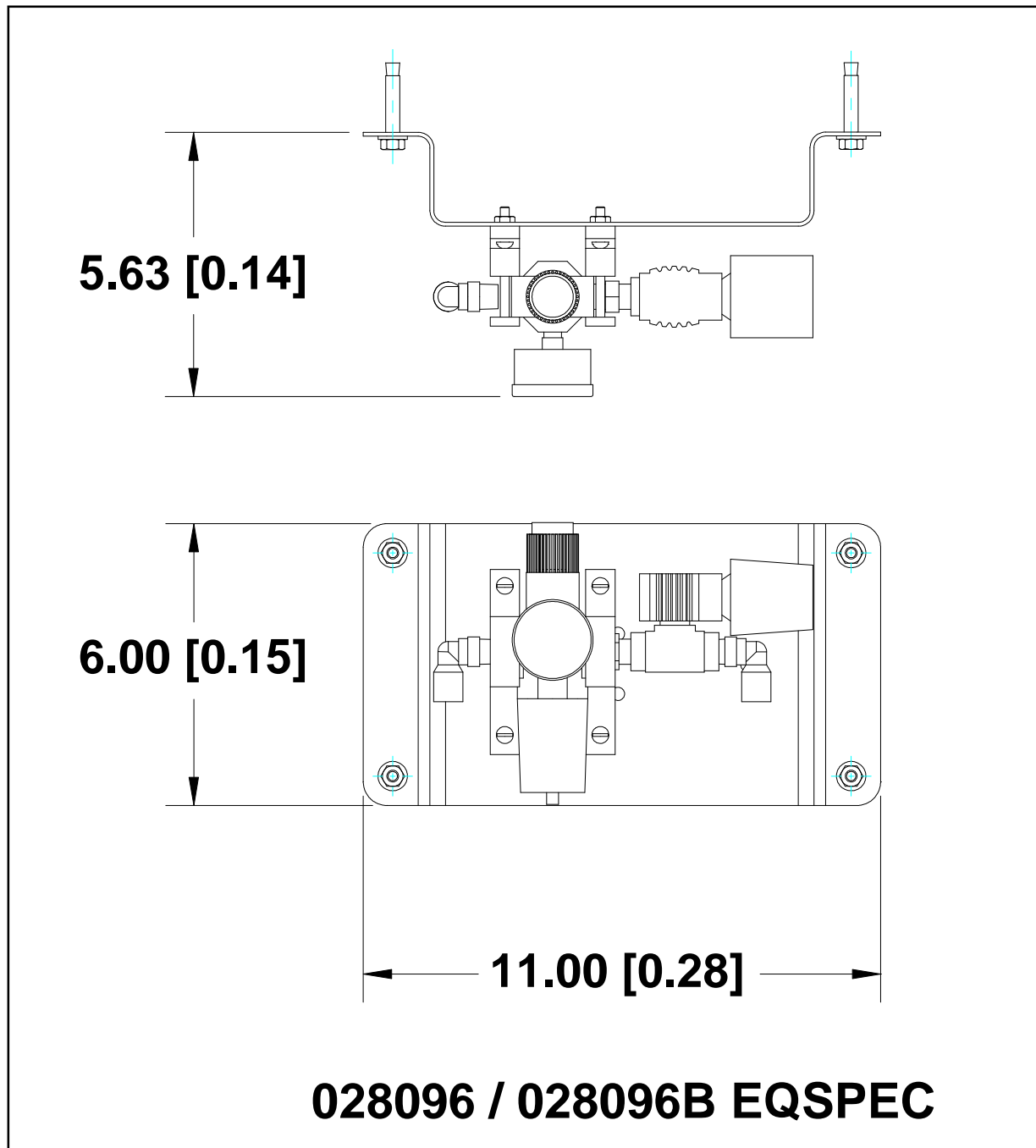
Air Requirements: ½" Line @ 40 psi (0.3 Mpa)

Shipping Weight: 10 lbs. (5 kg)

Controller Function: 1 (On)

**PECO Car Wash Systems – 244 Rex Boulevard – Auburn Hills – Michigan – 48326 –
USA – 1-248-299-5800**

2W1 2-WAY VALVE AIR CONTROL



**PECO Car Wash Systems – 244 Rex Boulevard – Auburn Hills – Michigan – 48326 –
USA – 1-248-299-5800**

2W1 2-WAY VALVE AIR CONTROL

Equipment Specification

Technical Data: 2W1

Construction: Stainless Steel Frame

Length: 11" (.28 m)

Height: 6" (0.15 m)

Width: 6" (0.15 m)

Vehicle Height Clearance: n/a

Water Output: n/a

Water Input: n/a

Electrical Requirements: 24 or 120 VAC (0.42 amp / .09 amp)

Hydraulic Requirements: n/a

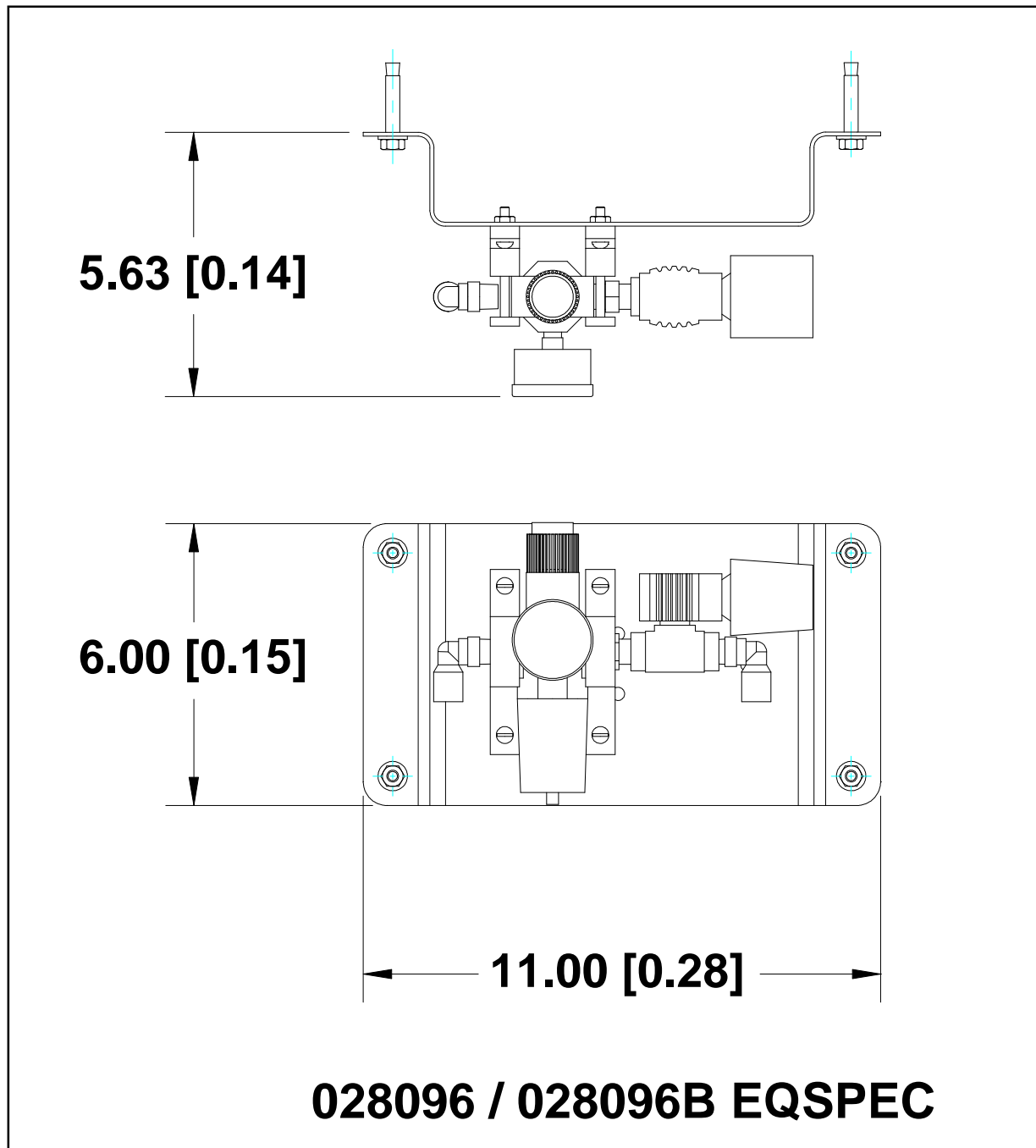
Air Requirements: ½" Line @ 40 psi (0.3 Mpa)

Shipping Weight: 10 lbs. (5 kg)

Controller Function: 1 (On)

**PECO Car Wash Systems – 244 Rex Boulevard – Auburn Hills – Michigan – 48326 –
USA – 1-248-299-5800**

2W1 2-WAY VALVE AIR CONTROL



**PECO Car Wash Systems – 244 Rex Boulevard – Auburn Hills – Michigan – 48326 –
USA – 1-248-299-5800**