

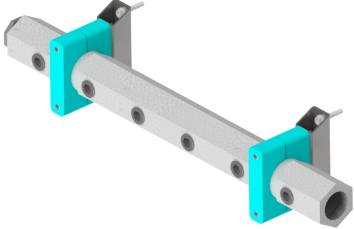
**PECO Part
#028100**

MFG:



The Most
Helpful Brand
In Car Washing

WM WATER CONTROL MANIFOLD LOW PRESSURE 6-3/4" PORT



Specifications

WM4 WATER MANIFOLD STATION WITH 4 SOLENOIDS

Equipment Specification

Technical Data: WM4

Construction: Stainless Steel Frame / Aluminum Manifold

Length: 28" (0.71 m)

Height: 6" (0.15 m)

Width: 12" (0.30 m)

Vehicle Height Clearance: n/a

Water Output: Depend on pressure

Water Input: 1½" Female NPT Port (city water pressure or reclaim pump)

Electrical Requirements: 24 or 120 VAC (.625 amps / .125 amps) each solenoid

Hydraulic Requirements: n/a

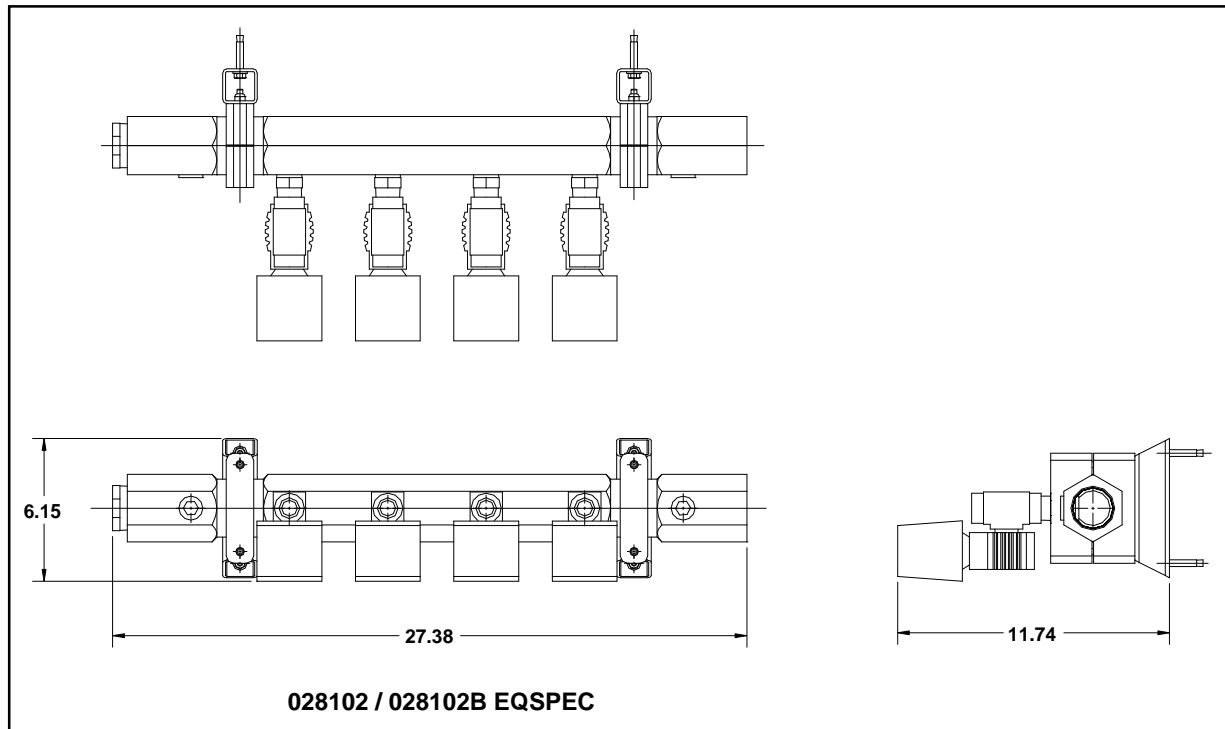
Air Requirements: n/a

Shipping Weight: 25 lbs. (55 kg)

Controller Functions: 1 to 4

**PECO Car Wash Systems – 244 Rex Boulevard – Auburn Hills – Michigan – 48326 –
USA – 1-248-299-5800**

WM4 WATER MANIFOLD STATION WITH 4 SOLENOIDS



**PECO Car Wash Systems – 244 Rex Boulevard – Auburn Hills – Michigan – 48326 –
USA – 1-248-299-5800**