

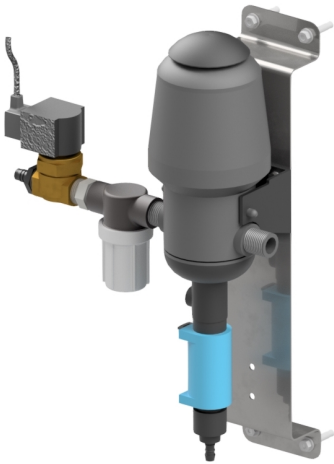
PECO Part #990032b

MFG:



The Most
Helpful Brand
In Car Washing

RET PDMSb DEMA METERING STATION (50-1500) W/120VAC SOLENOID&



Description

The PED Dosatron Pumping Station is designed to deliver a mixture of water and solution up to 11 gpm. This unit is capable of pumping soap, presoaks, waxes and many other solutions. This unit uses a Dosatron water-driven dispenser.

Specifications

Electrical Single Phase Requirements

Total System Electrical Single Phase Requirements:	
	0AMPs @ 24vac
	0.12AMPs @ 120vac
	0AMPs @ 220vac

PDMS DEMA Proportional Pump Station

Equipment Specification

Technical Data: PDMS DEMA

Construction: Stainless Steel Frame

Length: 16.12" (0.41 m)

Height: 20.25" (0.52 m)

Width: 7.25" (0.19m)

Vehicle Height Clearance: n/a

Water Input: 3/4" Line at 40 psi (0.3 Mpa)

Water Output: 0.9 to 11 gpm (.34 to 41.6 lpm)

Electrical Requirements: 24/120 VAC (0.63 / 0.13 amp)

Hydraulic Requirements: n/a

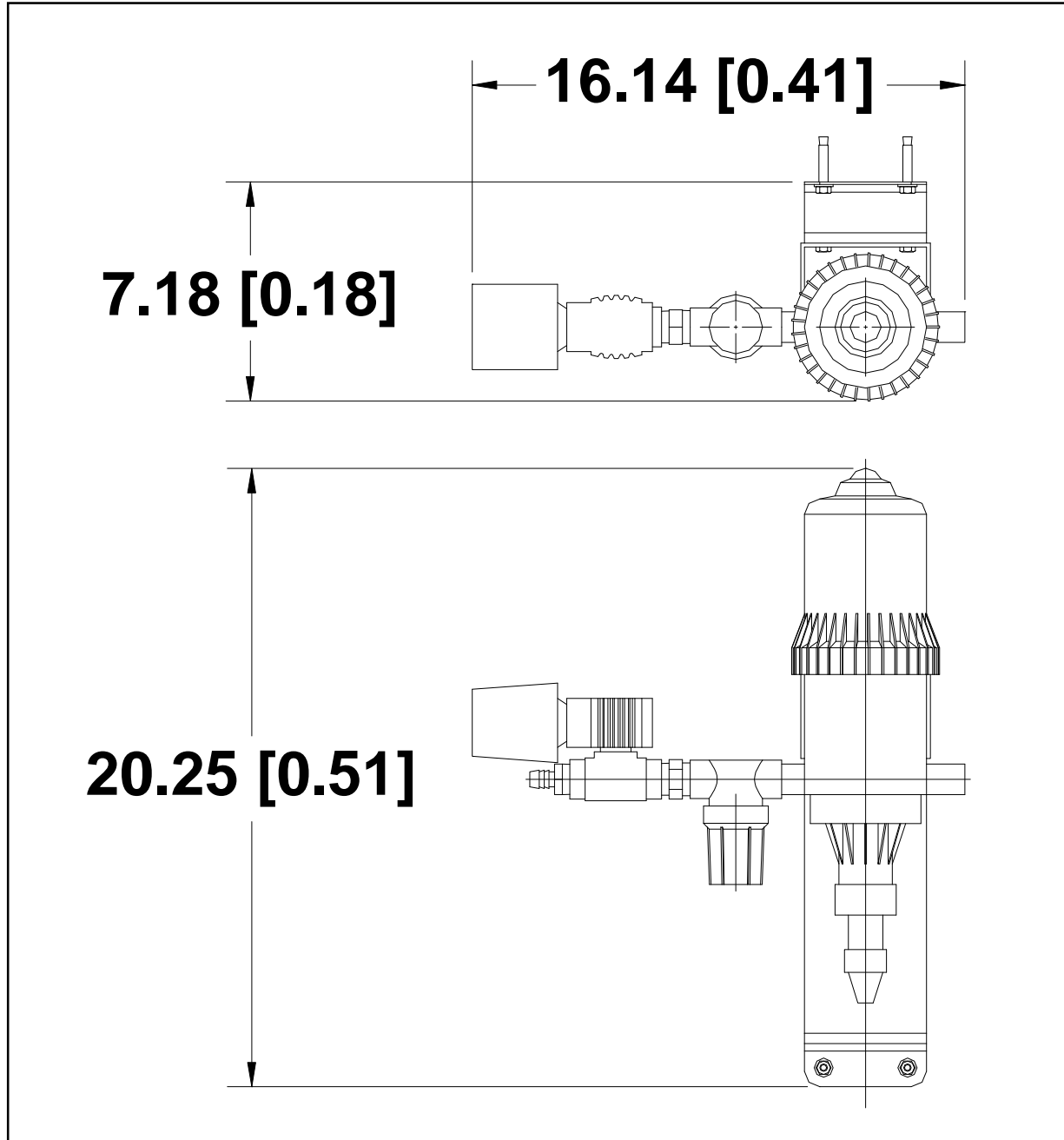
Air Requirements: n/a

Shipping Weight: 12 lbs. (5.5 kg)

Controller Function: 1 (Pump On)

**PECO Car Wash Systems – 244 Rex Boulevard – Auburn Hills – Michigan – 48326 –
USA – 1-248-299-5800**

PDMS DEMA Proportional Pump Station



**PECO Car Wash Systems – 244 Rex Boulevard – Auburn Hills – Michigan – 48326 –
USA – 1-248-299-5800**