

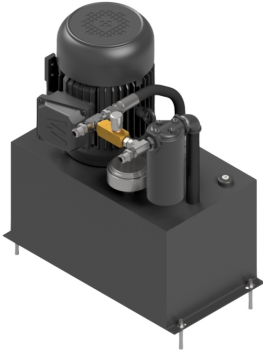
PECO Part #990098

MFG:



The Most
Helpful Brand
In Car Washing

RET PHS3 HYDRAULIC SUPPLY SYSTEM 2HP(2.9GPM@1250PSI)5GAL/VE



Description

The **PHS3 Hydraulic Supply System** is designed to deliver hydraulic oil at 2.9 gpm @ 1,200 psi (11.4 lpm @ 3.5 MPa). The primary use for this hydraulic system is to supply hydraulic fluid to PE300M, PE300MI and PE300 high-pressure systems. This unit uses a Vickers Vane Pump and is direct driven a Love Joy Flex Coupling to a 2 H.P. electrical motor. This system is equipped with a flow control valve to regulate the flow of the hydraulic fluid.

- 2 HP 3-Phase TEFC Electric Motor 208V/230V/460V 60 Hz.
- 5-gallon Vertical Reservoir Tank.
- Easy Access Lid for easy Maintenance to Vickers Pump and Love Joy Coupling.
- Return line filter
- Filter breather
- Suction strainer
- Flow control 0-3 GPM
- Vickers vane pump
- Supply and Return is terminated with a 1/2 JIC Fitting.

Specifications

Electrical Three Phase Requirements				
0	Kilowatts Usage	1 Starters <i>including Overloads</i>		
	6.86	Total AMPs = 208vac @ 60Hz	3.75	Total AMPs = 380vac @ 50Hz
	6.20	Total AMPs = 230vac @ 60Hz	3.57	Total AMPs = 400vac @ 50Hz
	3.10	Total AMPs = 460vac @ 60Hz	3.44	Total AMPs = 415vac @ 50Hz
	2.48	Total AMPs = 575vac @ 60Hz		

PHS3 HYDRAULIC SUPPLY UNIT

Equipment Specification

Technical Data: PHS3

Construction: Painted Steel Unit

Length: 19" (0.48 m)

Height: 20.38" (0.52 m)

Width: 13.5" (0.34 m)

Vehicle Height Clearance: n/a

Water Input: n/a

Water Output: n/a

Electrical Requirements: 2 HP 3-phase 208-230/460 VAC (6.2-6.1/3.1 amps)
(1.5 kW)

Hydraulic Delivery: 3 gpm @ 500 psi (11.4 lpm @ 3.5 MPa)

Hydraulic Requirements: n/a

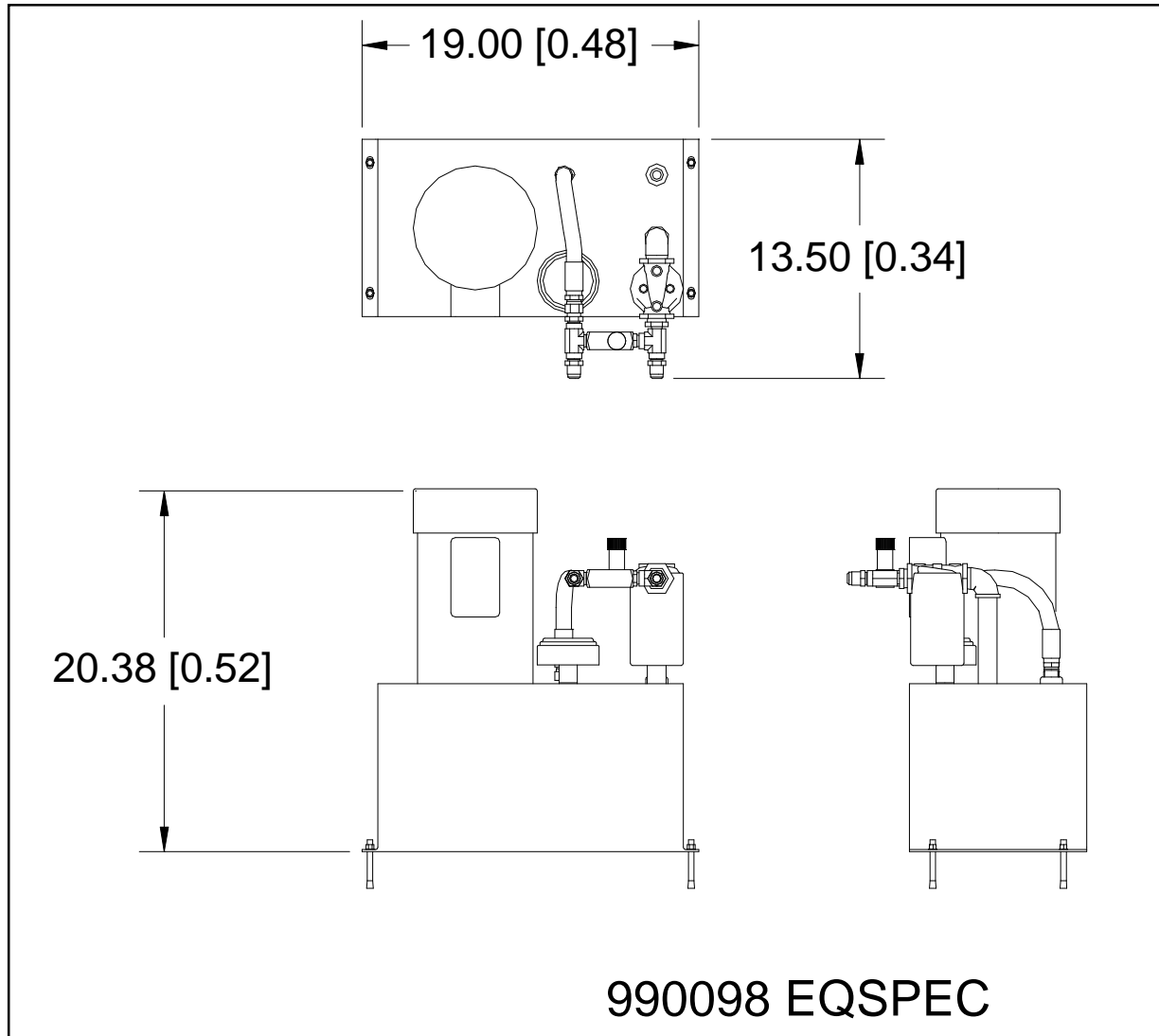
Air Requirements: n/a

Shipping Weight: 65 lbs. (30 kg)

Controller Function: 1 (Pump On)

**PECO Car Wash Systems – 244 Rex Boulevard – Auburn Hills – Michigan – 48326 –
USA – 1-248-299-5800**

PHS3 HYDRAULIC SUPPLY UNIT



**PECO Car Wash Systems – 244 Rex Boulevard – Auburn Hills – Michigan – 48326 –
USA – 1-248-299-5800**