

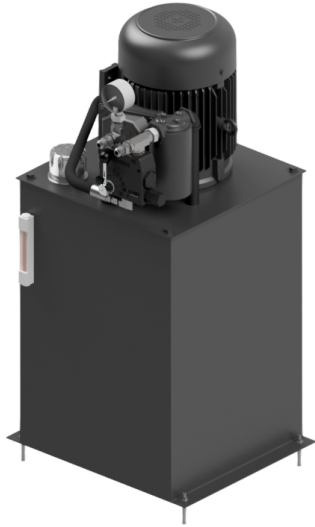
## PECO Part #990099

MFG:



The Most  
Helpful Brand  
In Car Washing

## RET PHS5 HYDRAULIC SUPPLY SYSTEM 5HP(7.3GPM@1250PSI)20GAL/V



## Description

The **PHS5 Hydraulic Supply System** is designed to deliver hydraulic oil at 7.3 gpm @ 1200 psi (22.7 lpm @ 8.3 MPa). The primary use for this hydraulic system is to supply hydraulic fluid to side washers, tire washers and wraparounds. This unit uses a Vickers Vane Pump and is direct driven by a 5 H.P. electrical motor with a Love Joy Flex Flange coupling. This system is equipped with a pre-plumbed flow control valve to regulate the flow and pressure of the hydraulic fluid.

- 5 HP 3-Phase TEFC Electric Motor 208V/230V/460V 60 Hz.
- 20-gallon Vertical Reservoir Tank.
- Easy Access Lid for easy Maintenance to Vickers Pump and Love Joy Coupling and Low Level Float Switch.
- Sight glass and temperature gauge
- Return line filter
- Filter breather
- Suction strainer
- Pressure-compensated PRINCE flow control 0-8 GPM w/ relief to tank.
- Pressure gauge 0-2000psi
- Low-level switch
- Vickers vane pump
- Supply and Return is terminated with a 1/2 JIC Fitting.

# Specifications

Electrical Three Phase Requirements			
0	Kilowatts Usage	1	Starters <i>including Overloads</i>
	15.92	Total AMPs = 208vac @ 60Hz	8.72Total AMPs = 380vac @ 50Hz
	14.40	Total AMPs = 230vac @ 60Hz	8.28Total AMPs = 400vac @ 50Hz
	7.20	Total AMPs = 460vac @ 60Hz	7.98Total AMPs = 415vac @ 50Hz
	5.76	Total AMPs = 575vac @ 60Hz	

# PHS5 HYDRAULIC SUPPLY UNIT

## Equipment Specification

### Technical Data: PHS5

**Construction:** Painted Steel Unit

**Length:** 19" (0.48 m)

**Height:** 20.38" (0.52 m)

**Width:** 13.5" (0.34 m)

**Vehicle Height Clearance:** n/a

**Water Input:** n/a

**Water Output:** n/a

**Electrical Requirements:** 5 HP 3-phase 208-230/460 VAC (15.8-14.4/7.2 amps)  
(3.73 kW)

**Hydraulic Delivery:** 6 gpm @ 1200 psi (22.7 lpm @ 8.3 MPa)

**Hydraulic Requirements:** n/a

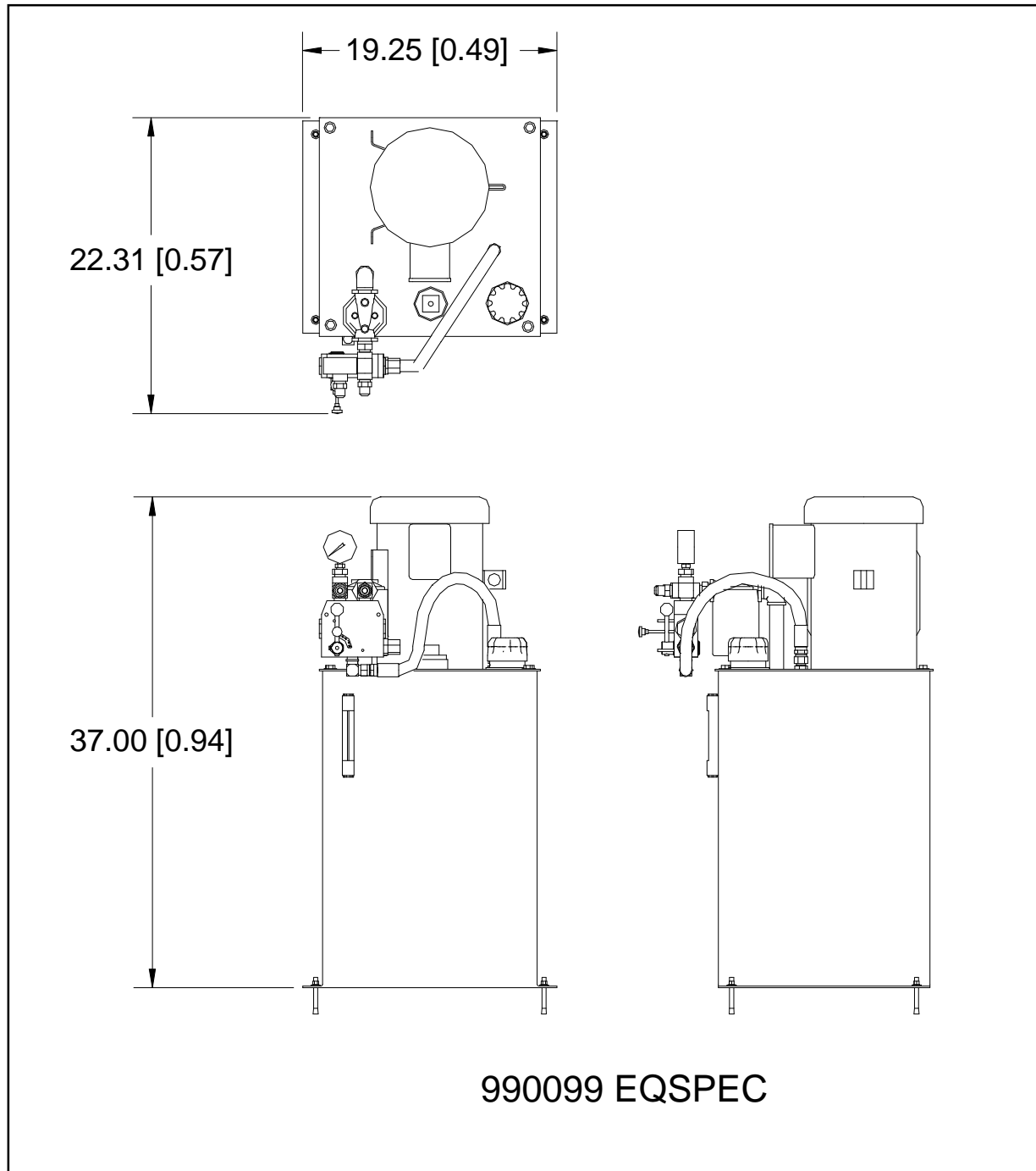
**Air Requirements:** n/a

**Shipping Weight:** 100 lbs. (46 kg)

**Controller Function:** 1 (Pump On)

**PECO Car Wash Systems – 244 Rex Boulevard – Auburn Hills – Michigan – 48326 –  
USA – 1-248-299-5800**

## PHS5 HYDRAULIC SUPPLY UNIT



**PECO Car Wash Systems – 244 Rex Boulevard – Auburn Hills – Michigan – 48326 –  
USA – 1-248-299-5800**